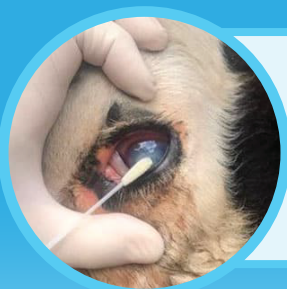


PINKEYE

SAMPLING PROCEDURES



Cambridge Technologies recommends sampling eyes showing early clinical signs, such as those with excessive tearing, mild clouding, or a lesion just beginning to ulcerate. Eyes with fully developed lesions are already damaged and might be past the initial stage of infection, which makes isolating causative organisms more difficult.



It is also recommended that a sterile wipe (non-alcohol) be used to clean any debris from the eye before sampling. Begin swabbing by sampling at the edge of the corneal lesion. Then, using the same swab, sample from the conjunctive tissue (third eyelid). Use this same technique with both the Amies and the Myco/viral swabs. Getting samples from multiple animals is the best way to get a representative sample.



We recommend using both an Amies broth/culture swab system as well as a Mycoplasma + viral broth/swab system for collecting and transporting Pinkeye-associated samples.



All swabs should be refrigerated immediately after sampling. Arrange for shipping as soon as possible. A prepaid next-day return label should be included in your diagnostic shipper. If you need a next-day return label emailed to you, please contact customer service. Samples need to be kept cool so multiple ice packs may need to be added to the shipper especially during the summer months. Any samples collected on Friday need to be refrigerated and shipped out first thing Monday morning as the lab is not open during the weekend.